

6 Surface thermal analysis of North Brabant cities and neighbourhoods during heat waves

Article 5: Surface thermal analysis of North Brabant cities and neighbourhoods during heat waves. Published in Journal of Land Use, Mobility and Environment, TeMA 1 (2016) 63-87 print ISSN 1970-9889, e-ISSN 1970-9870, DOI: 10.6092/1970-9870/3741

Leyre Echevarría Icaza^{1*}, Andy van den Dobbelsteen² and Frank van der Hoeven³

1 Delft University of Technology. Faculty of Architecture and the Built Environment. Address: Julianalaan 134, 2628 BL Delft, The Netherlands; E-Mail: L.EchevarriaIcaza@tudelft.nl

2 Delft University of Technology. Faculty of Architecture and the Built Environment. Address: Julianalaan 134, 2628 BL Delft, The Netherlands; E-Mail: a.a.j.f.vandendobbelsteen@tudelft.nl

3 Delft University of Technology. Faculty of Architecture and the Built Environment. Address: Julianalaan 134, 2628 BL Delft, The Netherlands; E-Mail: F.D.vanderHoeven@tudelft.nl

* Author to whom correspondence should be addressed; E-Mail: L.EchevarriaIcaza@tudelft.nl; Tel.: +34 619 80 32 71

Abstract

The urban heat island effect is often associated with large metropolises. However, in the Netherlands even small cities will be affected by the phenomenon in the future (Hove et al., 2011), due to the dispersed or mosaic urbanisation patterns in particularly the southern part of the country: the province of North Brabant. This study analyses the average night-time land surface temperature (LST) of 21 North-Brabant urban areas through 22 satellite images retrieved by Modis 11A1 during the 2006 heat wave and uses Landsat 5 Thematic Mapper to map albedo and Normalised difference temperature index (NDVI) values. Albedo, NDVI and imperviousness are found to play the most relevant role in the increase of night-time LST. The surface cover cluster analysis of these three parameters reveals that the 12 “urban living environment” categories used in the region of North Brabant can actually be reduced to 7 categories, which simplifies the design guidelines to improve the surface thermal behaviour of the different neighbourhoods thus reducing the Urban Heat Island (UHI) effect in existing medium size cities and future developments adjacent to those cities.

Keywords: urban heat island; climate change; sustainable urban planning; remote sensing

§ 6.1 Introduction

§ 6.1.1 Heat islands and medium size cities

The urban heat island (UHI) refers to the temperature difference between urban areas and their rural and/or natural surroundings. This temperature difference may affect the air temperature, the land surface temperature (LST) or both. Although the two are related, the difference is that while land surface temperature's peak takes place during the day, the air temperature differences are largest after sunset. The air temperature difference peak that is typically reached after sunset can reach up to 12°C for a city of 1 million inhabitants (United States Environmental Agency). These relative high temperatures are especially problematic during heat waves and can easily result in heat stress among vulnerable segments of the urban population, leading to widespread mortality. Several climate studies show that even though The Netherlands may seem relatively safe from heat events due to its moderate maritime climate and its polycentric urban structure, it is actually also affected by heat events like those that took place in France in 2003 or in Russia in 2010 (Hove et al., 2011; Van der Hoeven. and Wandl, 2014; Albers et al., 2015).

Many studies highlight the importance of developing and implementing urban planning measures to adapt our cities to climate change (Galderisi and Ferrara, 2012; Papa et al., 2015; Deppisch and Dittmer, 2015; Balaban, and Balaban, 2015). The impact that heat islands can have on society has been studied in the last decade by several research groups (Stone, 2012). A link was found between the night-time urban heat island as observed by satellites and the excess mortality in Paris during the heat wave of 2003 (Dousset et al., 2011). Other investigations showed that the urban heat island did have a measurable effect on aggravating the impact of the same heat wave event in Paris (Vandentorren et al., 2006). Similar conclusions were drawn in the case of London (Mavrogianni et al., 2011). In all of these cases the object of research is the large metropolis. Similar investigations into dispersed regional urbanisation patterns are lacking.

North Brabant is a province located in the South and Center of the Netherlands. It is one of the biggest and most populated Dutch provinces. Due to its polycentric urban structure the Netherlands still has a relative high population density. The population that inhabits the Dutch towns and cities is ageing and becomes more vulnerable to heat. The four climate scenarios that are drawn up by the Royal Netherlands Meteorological Institute (KNMI) predict an increase of the global temperatures of at least 1°C (Van den Hurk et al., 2006) and predictions foresee an increased probability of summer heat waves (Sterl et al, 2008). The definition of a heat wave differs from country to country. In the Netherlands each period of at least five consecutive days with a maximum temperature above 25°C, of which at least three days peak above 30°C is registered as an official heat wave.

§ 6.1.2 North Brabant: particular mosaic urban structure

In the context of urban heat, the province of North Brabant is particularly interesting. The urban structure of North Brabant (2.5 million inhabitants, 500,000 ha) consists of a network of almost 300 small-size cities (urban cores in rural areas with surfaces below 900 ha) and some 60 midsize cities (urban concentration areas with surfaces below 8,000 ha) interleaved with rural and natural park areas. The overall percentage of urbanized land represents 15.4%. The future spatial vision of North Brabant region (Provincie Noord-Brabant, 2010) organizes the midsize cities in three clusters: the first one comprises the two most important agglomerations Tilburg (12,000 ha and 550,000 inhabitants) and Eindhoven (750,000 inhabitants), the second one which comprises a group of cities to the west: Bergen op Zoom, Roosendaal, Etten-Leur, Breda, Oosterhout, Waalwijk, 's-Hertogenbosch and Oss (with sizes ranging from 12,900 ha in Breda to 5,590 ha in Etten-Leur) and the third category which consists of Uden (6,700 ha) and Veghel (7,900 ha), two former villages that have strongly grown in the last decade and that have a marked suburban and industrial character. The urban structure is considered as a network up to the point that the five most important cities of the region - Tilburg, Breda, 's-Hertogenbosch, Eindhoven and Helmond - receive the name of Brabantstad, which means in Dutch as much as: Brabant City.

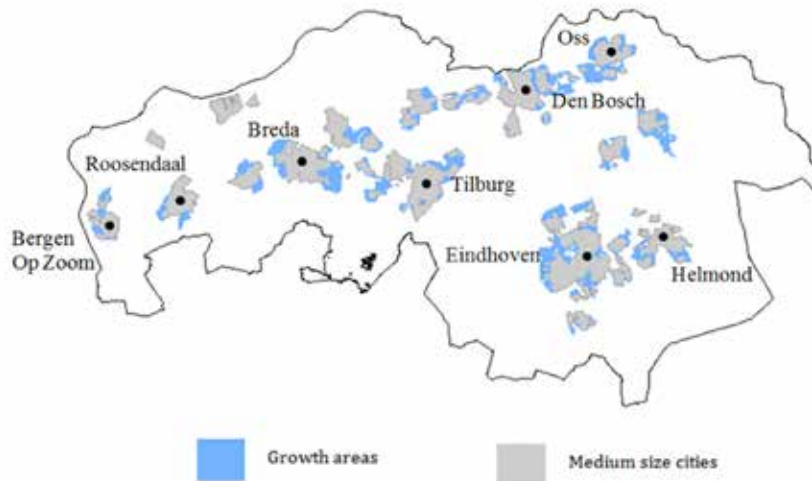


FIGURE 6.1 Growth areas adjacent to medium-size cities (Province North Brabant. Spatial vision, 2010)

– Future expansion plans of the region

The future spatial vision of North-Brabant (Provincie Noord-Brabant, 2010) foresees to enhance the spatial structure of the urban network through two different development prospects for small cities and for medium-size cities. The intention is to have midsize cities host regional urban infrastructures, as opposed to the small cities, which will inevitably play a role at a more local scale. In order to materialise the reinforcement of the urban network, the region of North Brabant has identified growth areas (in Dutch “zoekgebieden voor verstedelijking”) connected both to small and midsize cities (Provincie Noord-Brabant, 2014). These are rural areas, which will be converted into urban plots, connected to existing cities (Figure 6.1). The Province plans to urbanise over 25,000 hectares of which roughly 17,000 ha are adjacent to midsize cities. Overall the future percentage of urbanised land will increase from 15.4% to 20.4%. The province of North Brabant is aware of the implications of increasing the urbanised areas, and has used the “ladder for sustainable urbanisation” developed by the Dutch Ministry of Infrastructure and Environment to compare the urban development needs with the options to restructure nearby derelict areas prior to delimiting the “growth areas”. However, the potential urban heat island aggravation produced by the growth of urban areas has not been taken into consideration.

§ 6.1.3 Research questions

How can we ensure that future development plans do not aggravate the urban heat island effect in the province of North Brabant?

In order to answer this question, four sub questions have been formulated:

- What is the extend of the current heat island problem in North Brabant?
- How does albedo, Normalised difference vegetation index (NDVI), imperviousness, city size and proximity to other urban areas influence the phenomenon?
- Which of these play the most relevant UHI role?
- Can we establish a surface thermal urban classification to provide design guidelines to ensure that future developments do not aggravate the UHI phenomenon?

§ 6.2 Methodology

§ 6.2.1 Determining the role of different parameters in the formation of the UHI in the region of North Brabant

In the first section of the study the authors have mapped and calculated the average night-time land surface (LST) temperature (which has been calculated for 21 medium-size cities in the region of North Brabant with MODIS 11A1 images retrieved during the heat wave of 2006 in The Netherlands), albedo (calculated with Landsat 5TM imagery retrieved during the 2006 heat wave), NDVI (calculated with Landsat 5TM imagery retrieved during the 2006 heat wave), imperviousness coefficient (calculated using official Netherlands ArcGis files) and surface, and a multiple regression analysis has been completed to understand how each of these parameters affected the average night-time LST, and which of them played the most important role in the region of North Brabant. Excel's dynamic charts have been used to establish thresholds and reference figures for each of the analysed parameters.

§ 6.2.2 Night-time land surface temperature from July 2006 as a key UHI indicator

The spatial pattern of the daytime (LST) urban heat island differs often significantly from the spatial pattern of the night-time (air temperature) urban heat island. However, the night-time air temperature and LST heat islands have strong correlations (Nichol, 2005). The main exceptions are water surfaces. Because the cities in the province North-Brabant have relatively little open water, night-time satellite imagery can be used as a source of data for determining for the overall UHI effect.

In this context the authors analysed the average night-time surface temperature of 21 midsize cities (with surfaces ranging from 117 ha to 7,700 ha) using 22 satellite images retrieved by Modis 11A1 during July 2006 (Figure 6.2). July 2006 was the warmest month on record since systematic measurements started some 300 years ago in the Netherlands. The mean daily temperature in July 2006 was 22.3°C, almost 5°C higher than the average over the period of 1971-2000: 17.4°C according to the Royal Netherlands Meteorological Institute (KNMI, 2006). Temperatures reached on July 19th 2006 a maximum of 35.7 °C (KNMI, 2013).

Statistics Netherlands published an article in its web magazine that states that 1,000 inhabitants died in July 2006 above the average mortality in a July month. Predominantly in the western part of the country, by the way.

Topography plays a significant role in many regions in the world when it comes to climate. Not so in the case of North-Brabant. North-Brabant is like much of the rest of the Netherlands: flat. The lowest parts in the western part of the province measure 1-2 metres above sea level. The highest parts in the east at a distance of 100 kilometres are 45 metres above sea level.

There is a lack of prevailing winds during heat waves. Heat waves emerge in the Netherlands predominantly under the condition of low or even lacking wind speeds. Problems with urban heat occur especially when there is no or little wind. For example, during the temperature peak on July 19th the KNMI measured wind speeds between 2.0-3.0 m/s², while in urban areas these wind speeds would be significantly lower due to the many buildings, trees and other obstacles. Temperature is the dominant factor here.

MOD11A1 as used. It is a satellite imagery product issued by the Moderate Resolution Imaging Spectro-radiometer (MODIS), which has a resolution of 1,000 m and a daily temporal frequency. The images have been downloaded from the United States

Geological Survey webpage. First, the average night-time surface temperature for each of the medium size cities was calculated for each of the satellite images and afterwards the average value of all the heat wave satellite images retrieved during the heat wave. These two operations were performed using ArcGis.

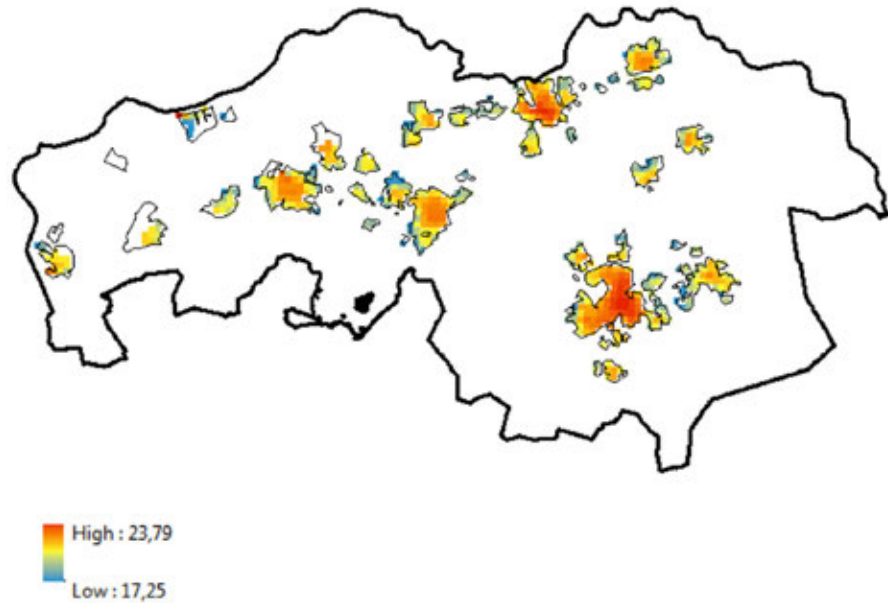


FIGURE 6.2 Average night-time LST urban areas of the province of North Brabant. LST values retrieved from Modis 11A1 imagery of the 23rd of July 2006. (Courtesy of the U.S. Geological Survey. USGS/NASA Modis)

§ 6.2.3 UHI-related parameters analysed

§ 6.2.3.1 Parameters related the urban design

Albedo, imperviousness and vegetation seem to be relevant parameters influencing the UHI. Several works have investigated the role of surface albedo in the UHI formation (Gao et al., 2014; Prado & Ferreira, 2005; Akbari et al., 2001; Taha, 1997; Sailor,

1995; Taha et al. 1992; Taha et al., 1988). Other studies have found a strong linear relationship between the land surface temperature (LST) and the imperviousness percentage and an inverse linear relationship between LST and the NDVI during the summer seasons (Nie & Xy, 2014, Yu & Lu, 2014; Heldens et al., 2013; Xu et al., 2012; Zhang et al., 2009; Weng & Lu, 2008; Xiao et al., 2007; Yuan & Bauer, 2007).

In this study the authors have used Landsat 5 TM satellite imagery from the 25th of July 2006 to calculate albedo and NDVI. The raw satellite images were downloaded from the US Geological Survey (USGS) webpage, Earth Resources Observation and Science Center (EROS). For the albedo calculation, the authors have used software for satellite imagery atmospheric topographic correction called ATCOR 2/3 which allows not only to correct atmospherically the images but also to generate the corresponding albedo distribution image (Richter & Schlapfer, 2013) (Figure 6.3). For the NDVI calculation the authors have first corrected Landsat 5 TM spectral bands 3 (visible) and 4 (near-infrared) – both with a 30 m resolution - in ATCOR 2/3 and further us a geospatial imagery treatment software called ENVI 4.7 was used to map the actual index, which is defined as $(NIR - VIS) / (NIR + VIS)$, where VIS (visible radiation) is the surface reflectance in the red region (650 nm) and NIR (near-infrared radiation) is the surface reflectance in the near-infrared region (850 nm) (Figure 6.4). The final average calculation of the average albedo and NDVI values for each of the 21 analysed cities has been done in ArcGis.

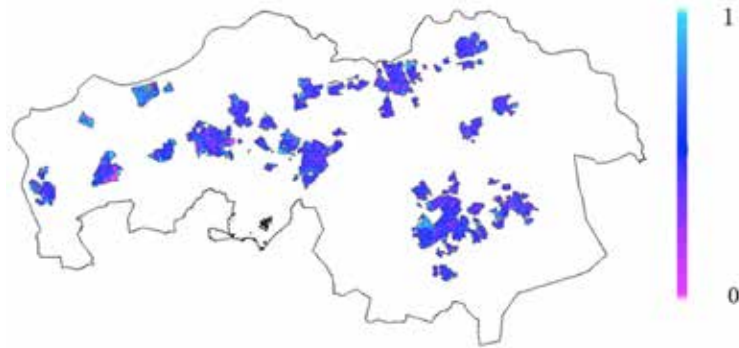


FIGURE 6.3 Average albedo in urban areas of the province of North Brabant. Landsat image (Courtesy of the U.S. Geological Survey. USGS/NASA Landsat) further processed with ENVI 4.7 and Atcor 2.3.

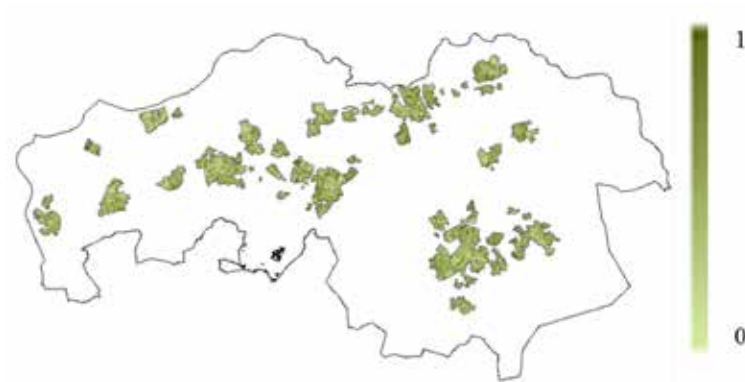


FIGURE 6.4 Average NDVI in urban areas of the province of North Brabant. Landsat image (Courtesy of the U.S. Geological Survey. USGS/NASA Landsat) further processed with ENVI 4.7 and Atcor 2.3.

The mapping and calculation of the average imperviousness was done calculating for each of the 21 midsize cities, the surface occupied by buildings and roads. The authors have processed in ArcGIS the TOP10NL file to obtain the percentage of imperviousness for each city.

§ 6.2.3.2 Parameters related to city size

The accumulation of urban heat is correlated with the size of cities. Several studies have made an effort to quantify the relationship between city size and the UHI effect. Oke (1973) found a linear relationship between the maximum urban heat island intensity (max UHI) and the logarithm of the population of cities in North America and in Europe: formulas 6.1 and 6.2 that were obtained using data from the 1970's and 1980's.

FORMULA 6.1

$$[\max \text{UHI} = 2.96 \log (P) - 6.41]. \text{ North America}$$

Where max UHI is the maximum urban heat island intensity and P is the population.

FORMULA 6.2.

$$[\max \text{UHI} = 2.01 \log (P) - 4.06]. \text{ Europe}$$

Where max UHI is the maximum urban heat island intensity and P is the population.

Park and Kufuoka have attempted to find the relationships for South Korea and Japan (Park, 1986; Fujioka, 1983; Hove et al., 2011) highlights that the studies carried out with results from 1987 to 2008 reveal that there is a steeper relationship between the maximal UHI intensity and the population, and that the maximal UHI for Dutch cities with a population between 100,000 and 800,000 inhabitants would range from 4 to 8°C. In North-Brabant the vast majority of the midsize cities have less than 100,000 inhabitants (except for Tilburg, Breda, 's-Hertogenbosch and Eindhoven). This study aims at analysing how the size of smaller Dutch cities affects the UHI effect. For the analysis of the size of the cities the authors have chosen to analyse the city surface instead of the city population, since they have found a very high correlation ($r^2 = 0.99$) between the number of inhabitants (2006, PBL Netherlands Environmental Assessment Agency) and the surface of the cities (Figure 6.5).

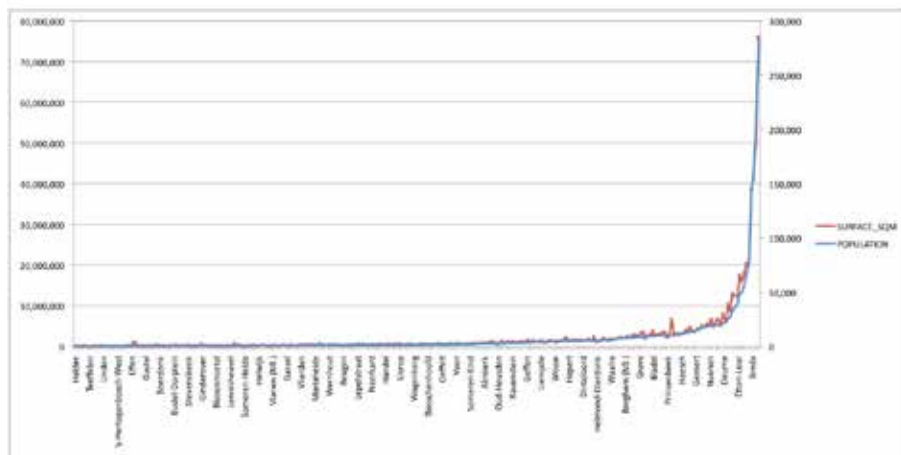


FIGURE 6.5 Analysis of surface and population of North Brabant medium-size cities.

- Thermal urban classification of medium-size cities in the region of North Brabant

In the second part of our study the authors have created a surface thermal classification map of the different neighbourhood typologies present in the analysed medium-size cities of the region of North Brabant. Urban climate classification maps provide practical information on the behaviour of different urban structures and climate, thus connecting climatological studies to urban planner's reality. There is a first group of investigations that have been completed based on site measurements and available urban morphology documentation. It is the case of several studies carried out before. Chandler (1965) used climate, physiography and built form to classify Greater London in four zones. Auer (1978) analysed vegetation and building characteristics to create 12 "meteorologically significant" land uses in the city of St. Louis. Ellefsen (1990) analysed geometry, street configuration and construction material for the creation of "urban terrain zones". Wilmers (1991) worked on urban and rural structures, use and vegetation to identify the main "climatotopes" in Metropolitan Hannover. Scherer (1999) analysed land use and topography for the generation of a refined "climatope" classification of the region of Basel. Oke (2004) studied urban structure, cover, fabric, metabolism and potential to generate "urban climate zones".

Stewart & Oke (2012), finally, researched "local climate zones" for urban heat island observation. There is a second group of papers that have produced urban climate classifications based on remote sensing analysis, which systematizes and makes it more cost effective. It is the case of the semi-automatic classification carried out for the city of Toulouse (Houet & Pigeon, 2011) to classify sample areas in "urban climate zones", the surface material assessment of urban zones for the generation of "urban structure types" in the city of Munich (Heiden et al., 2012), the socio-economic and environmental impacts of the different urban structures in the same city (Pauleit & Duhme, 2000), the object-based image classification used to map urban structure typologies also in Munich (Wurm et al. 2010) and the land-use classification produced for metropolitan Atlanta (Tang, 2007).

In the Netherlands there are two main "urban living environment" classification systems. One is the one developed by ABF (ABF research, 2005) and the other one is RIGO-typology for neighbourhoods built before and after the war (RIGO 1995; RIGO, 1997). Both analyse physical characteristics of housing and urban equipment but Rigo classification also takes into consideration socio-economic factors (Planbureau voor de leefomgeving, 2006). Even though these "urban living environment" typologies are consistent throughout the country, since 2004 the role of these classification systems has considerably been reduced since the approval of the Spatial Strategy of 2004 - Nota Ruimte 2004 (VROM, 2004) - which conferred most of the spatial policy competences to provinces and municipalities. Most provinces and municipalities have used these as a basis to develop their own classification systems to analyse the existing built environment and to create design guidelines for future developments from different

angles. In the case of the province of North Brabant, an “urban living environment” classification was carried out based on physical characteristics of the neighbourhoods (location, density, housing typology and mix of uses) (Figure 6.6) in the context of a housing survey carried out in 1998 (WBO, 1998) and further been used in other housing surveys of the region (Poulus & Heida, 2002). This classification establishes 12 main categories: high-density city centre, city centre, pre-war neighbourhood, post-war compact neighbourhood, post-war soil bound neighbourhood, urban green, small urban centre, small urban, small urban green, village centre, village, rural accessible.

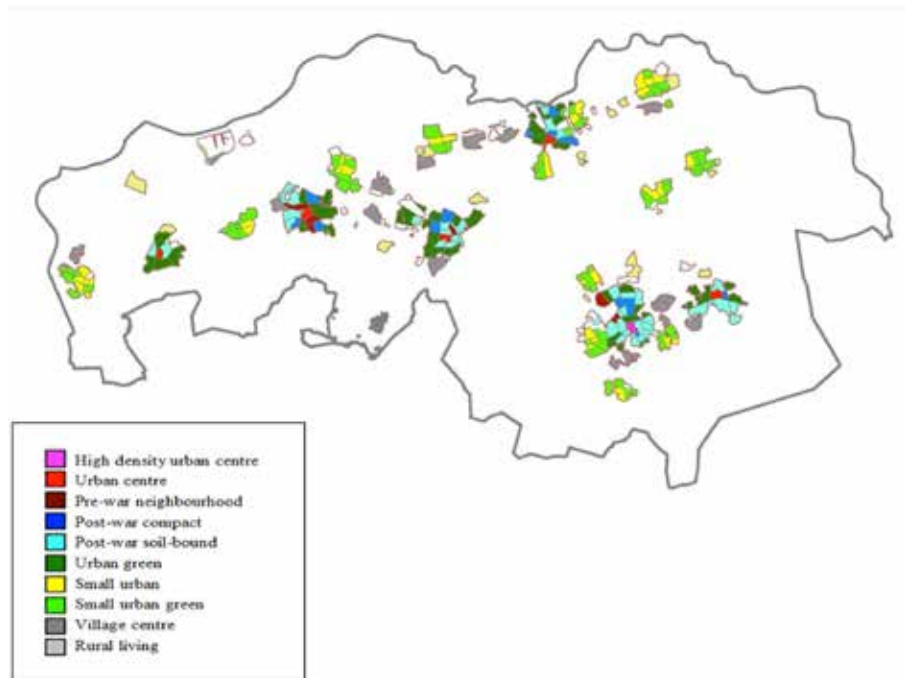


FIGURE 6.6 Analysis of surface and population of North Brabant medium-size cities (ABF research, 2005)

In this study a 6-cluster surface cover thermal classification of the urban cores of the region of North Brabant was created using the three most relevant parameters (identified in the first part of the study) influencing night-time urban LST to complete an unsupervised cluster classification in GIS. Further the surface cluster classification was overlapped with the “urban living environment” classification of the region of North Brabant, in order to review this official “urban living environment” classification with surface cover thermal criteria.

§ 6.3 Results

§ 6.3.1 The role of different parameters in the formation of the UHI in the region of North Brabant

The multiple regression analysis of the average values obtained for Albedo, NDVI, imperviousness, distance to the nearest urban area and town size, shows that there is a multiple correlation coefficient of $R=0.7$ and $R^2=0.5$ that relates these parameters with the average night-time surface temperature (Figure 6.7). The following parameter coefficients were obtained:

FORMULA 6.3

$$\text{LST (average night)} = 27.7 - 34.8 \cdot A + 2.3 \cdot 10^{-8} \cdot S - 0.1 \cdot \text{NDVI}$$

Where A = Albedo, S = surface and NDVI = Normalised Difference Vegetation Index

Average Modis night time LST. July 2006.	Albedo	NDVI	% impervious surface	Distance to nearest town (in m)	Surface (in sqm)
19,1	0,23	0,40	23,0	1051	1.731.927
19,3	0,22	0,36	31,0	1175	1.185.046
19,5	0,22	0,35	32,0	445	5.344.222
19,6	0,22	0,33	31,7	1472	7.077.232
19,6	0,22	0,32	34,2	306	4.523.848
19,8	0,21	0,50	28,8	1101	1.699.638
20,1	0,21	0,41	28,0	154	1.815.197
20,4	0,21	0,40	30,5	419	5.880.326
20,5	0,21	0,46	28,4	220	6.569.954
20,6	0,21	0,30	35,4	135	42.534.733
20,6	0,22	0,35	31,0	264	4.112.599
20,7	0,22	0,39	37,2	509	8.318.652
20,9	0,21	0,36	30,5	0	1.328.614
20,9	0,22	0,31	31,9	532	12.355.689
21,0	0,20	0,50	24,9	225	229.409
21,0	0,21	0,33	31,1	0	40.850.073
21,0	0,22	0,33	36,9	365	43.619.598
21,0	0,22	0,34	33,0	733	21.948.146
21,2	0,21	0,33	32,9	0	26.512.601
21,3	0,22	0,34	30,2	2500	13.259.052
21,8	0,22	0,31	37,4	0	77.728.224

FIGURE 6.7 Data list of the analysed medium size cities of the region of North Brabant. Parameters analysed: night-time LST, albedo, NDVI, imperviousness, distance to nearest town and surface.

It seems that the most relevant indicators in this case are albedo and NDVI (Figure 6.8). Imperviousness, the distance to nearest town and the surface of the analysed cities do not seem to play a significant role in the LST night values for the medium-size cities analysed in the region of North Brabant, which do not exceed 7,700 ha in any case. The maximum calculated average city night-time LST difference is 2.9°C. The average city albedo values are pretty similar for all cities and range from 0.20 to 0.23. NDVI variations vary from 0.31 to 0.50 and imperviousness coefficient ranges from 23% to 37.4%. The future growth of most medium-size cities of the regions will not per se aggravate the UHI phenomenon, in turn it will be the design of the new neighbourhoods, which will impact or not the formation of urban heat in the province.

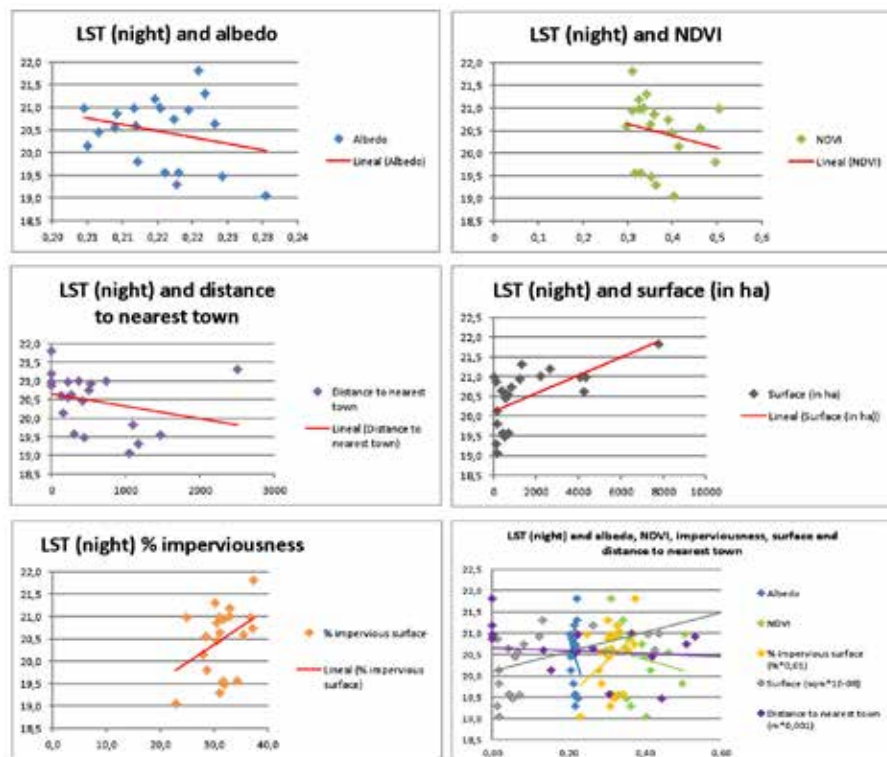


FIGURE 6.8 Analysis of the relationship between the different parameters and night-time average LST, for each of the analysed medium size cities in the region of North Brabant.

§ 6.3.2 Redefining the “urban living environment” classification based on thermal surface cover criteria

- Unsupervised surface thermal clustering

Even though the average LST presents maximum variations of 3°C (section 6.3), an unsupervised cluster classification of the three most relevant surface cover parameters (albedo, NDVI and imperviousness) was completed, in order to understand the different surface behaviours within each town. 6 different clusters were obtained. Even though the average night-time LST of these clusters are pretty similar, each of these clusters has a singular albedo, NDVI and imperviousness combination (Figure 6.9). The thermal surface cover assessment is more accurate when performed through the unsupervised classification of albedo, NDVI and imperviousness than through the calculation of the night-time LST, due to the tools used in this study for these calculations. Albedo and NDVI are calculated based on Landsat satellite imagery which has a resolution of 30 m and imperviousness is calculated based on a GIS model whereas night LST is calculated based on Modis 11A1 satellite imagery which has a 1km resolution. Modis 11A1 has a resolution appropriate for average city LST calculations, but not for surface cover discrimination.

The combined analysis of these three parameters allows classifying different surface typologies. The scatterplots analysis (Figure 6.10, figure 6.11 and figure 6.12) highlights the importance of the combined analysis. There are many areas from different clusters sharing identical values for each parameter separately; however they present different albedo, NDVI and imperviousness combinations. Even though the average city values for albedo, NDVI and imperviousness did not differ considerably from one city to the next (Figure 6.8), the surface cover cluster analysis presents average albedo ranging from 0.11 to 0.30, NDVI varying from 0.18 to 0.55 and imperviousness coefficients going from 0.21% to 0.41%.

The spatial distribution of each of these clusters reveals that three of these clusters (clusters 1 to 3) correspond to clusters of built area surface cover, and three of these clusters (clusters 4 to 6) correspond to non-built areas surface cover clusters (Figure 6.13). Cluster 1 corresponds to specific urban areas with the poorest surface thermal behaviour, mainly present in small specific areas of the city centres or of industrial areas. They have very low albedo (0.11), high imperviousness (39%), and low NDVI (0.17). Cluster 2 presents a similar average NDVI value (0.19), slightly higher imperviousness (0.42) and considerably higher albedo (0.2) than cluster 1. The main difference between cluster 1 and cluster 2 is the albedo. The majority of the city centre surfaces belong to cluster 2. Cluster 3 seems to correspond to urban residential areas

(row houses) with interspersed green areas, presenting a slightly higher albedo (0.24), higher NDVI (0.28) and lower imperviousness (0.31). Cluster 4 can be identified with low density residential areas (detached houses) areas of urban parks with trees with higher NDVI, lower albedo (due to the presence of greenery) and slightly higher imperviousness. Cluster 5 corresponds to urban trees and water areas with the highest NDVI (0.55), the lowest imperviousness 22% and a relatively low albedo (0.21 due to the presence of vegetation) and cluster 6 corresponds to bare soil areas with the highest albedo (0.31), considerably low NDVI (0.20) and small imperviousness 26% (Figure 6.9).

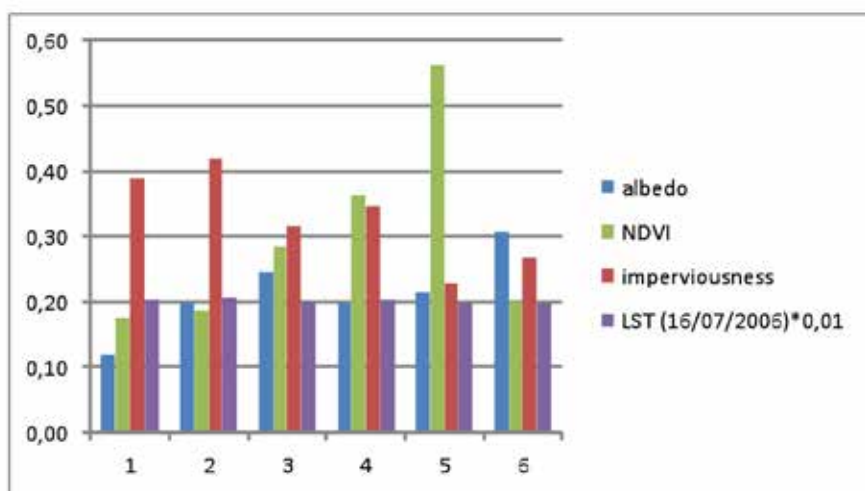


FIGURE 6.9 Average albedo, NDVI, imperviousness and night LST values for each of the 6 clusters resulting from the unsupervised classification of the albedo, NDVI and imperviousness maps of the analysed medium-size cities of North Brabant.

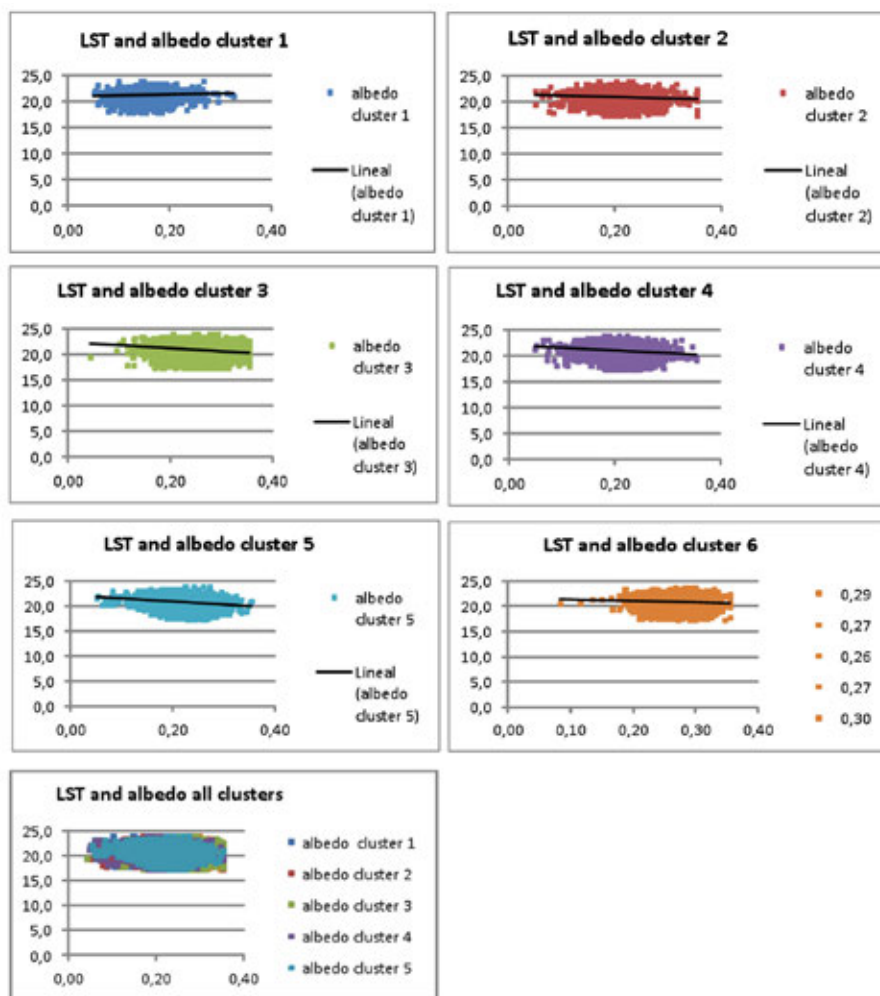


FIGURE 6.10 Scatterplots of night LST and albedo, for each of the different surface cover clusters.

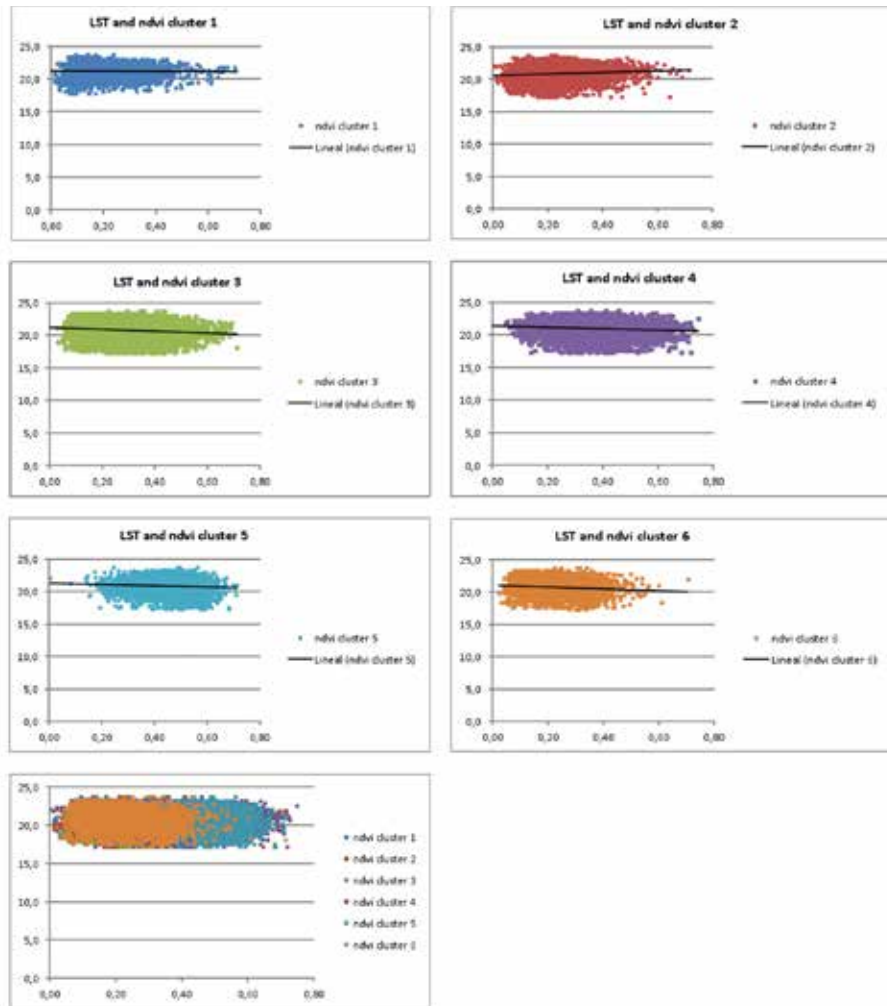


FIGURE 6.11 Scatterplots of night LST and NDVI, for each of the different surface cover clusters.

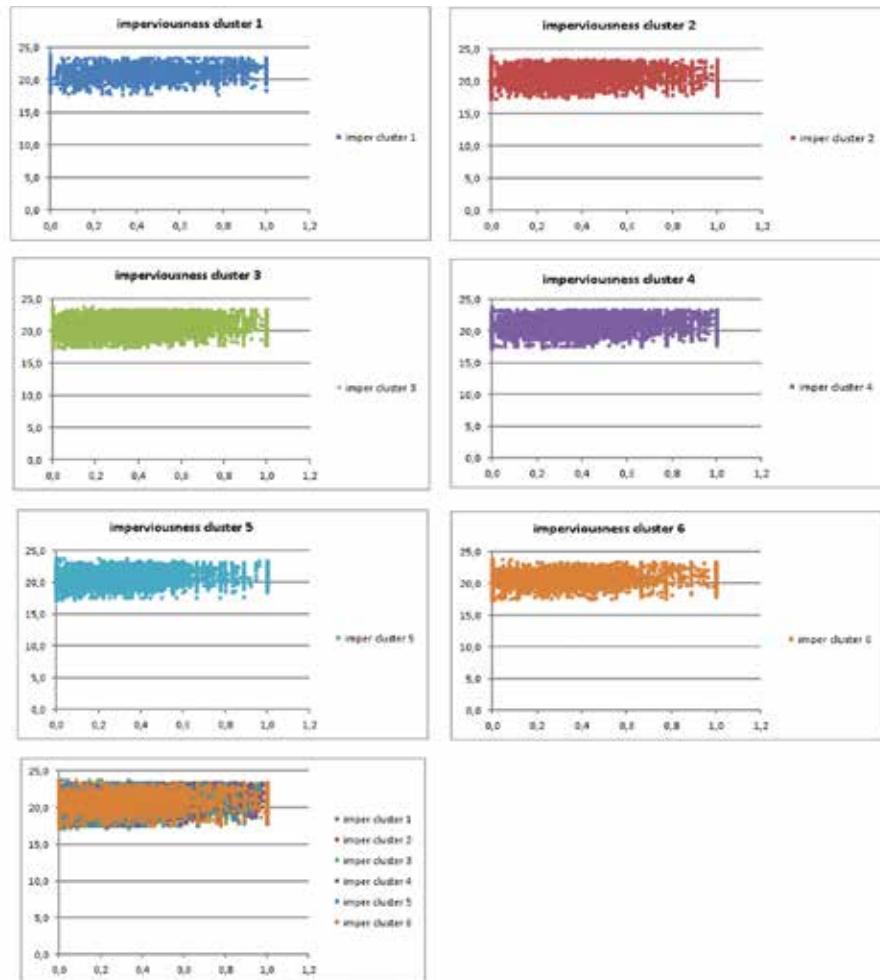


FIGURE 6.12 Scatterplots of night LST and imperviousness, for each of the different surface cover clusters.

The analysis of Eindhoven metropolitan area reveals that the city centre is mostly covered with cluster 2 surfaces, and that in turn, cluster 4 has more presence in areas outside the city centre. Cluster 1 is only present in very specific, heat absorbing surface areas, whereas cluster 6 is hardly present in the city area (this is why it was not included in the analysed figure) (Figure 6.13 and Figure 6.14).

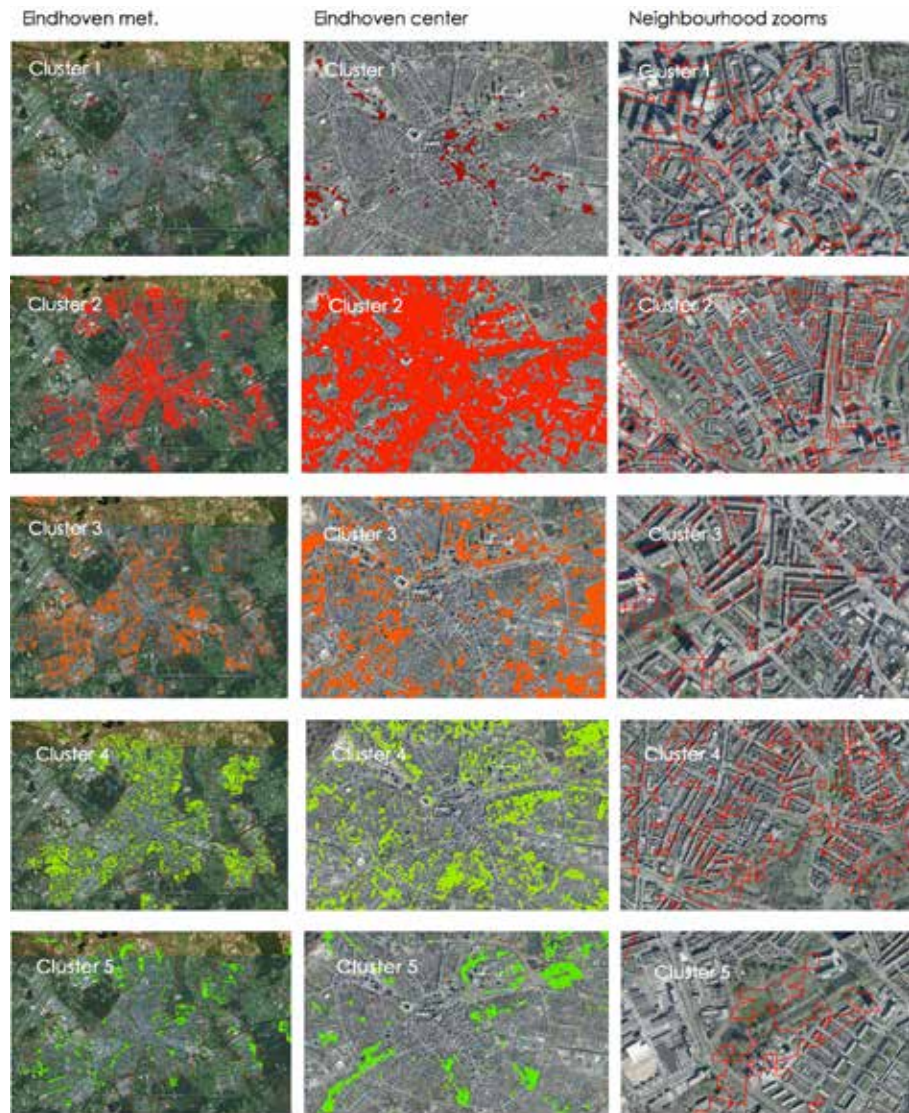


FIGURE 6.13 Spatial distribution of surface cover clusters in Eindhoven metropolitan area.

- Analysis of the presence of surface thermal clusters in “urban living environment” categories

The maps of Eindhoven metropolitan area illustrate the different spatial distribution of the clusters and the “urban living environment” maps. Each “urban living environment” map comprises a specific surface cluster mix (Figure 6.14). In order to analyse how the surface thermal clusters match with the “urban living environment” categories of the region of North Brabant, the proportion of clusters found in each of the “urban living environment” categories (Figure 6.15) was calculated. This analysis reveals that “urban living environment” classes 3, and 5 (pre-war neighbourhood and post-war ground based) present similar surface covers where clusters 2 cover more than 35% of the surface and where the proportion of urban clusters (1, 2 and 3) is in all cases above 60%. The cluster mix analysis, also reveals that “urban living environments” 4, 6, 7, 8 and 9 (post-war compact, green, small urban centre, small urban and small urban green) present similar surface cover mixes, with similar cluster 2 and 4 presence, and where the proportion of urban surface cover clusters (1,2 and 3) is around 50%. The 12 category “urban living environment” classification applied in North Brabant, could actually be reduced to a 7 surface cover classification.

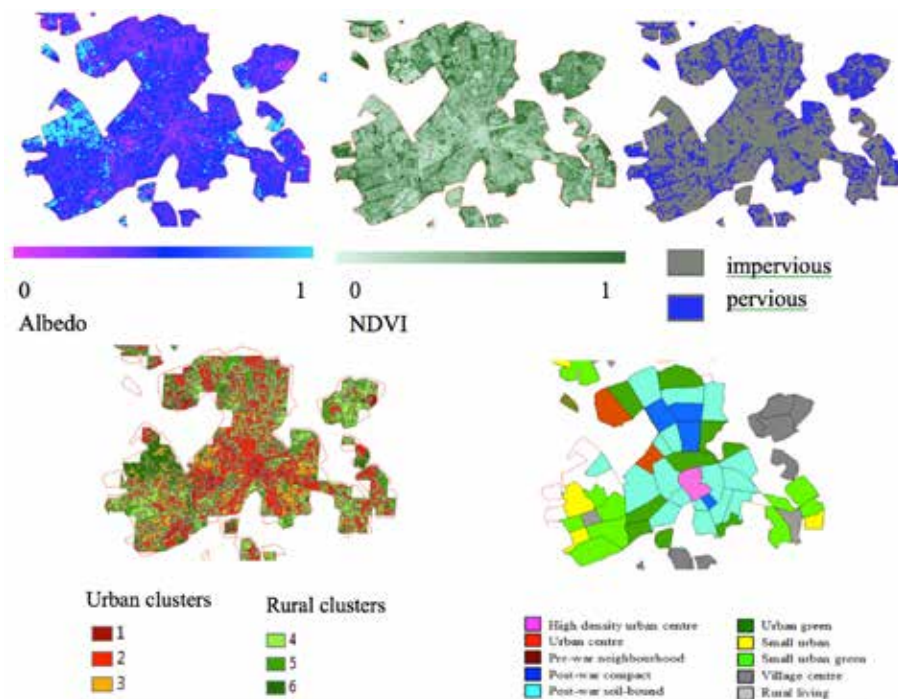


FIGURE 6.14 Compilation of LST-related maps for Eindhoven metropolitan area: Albedo, NDVI, imperviousness, surface cover clustering and “urban living environment” categories.

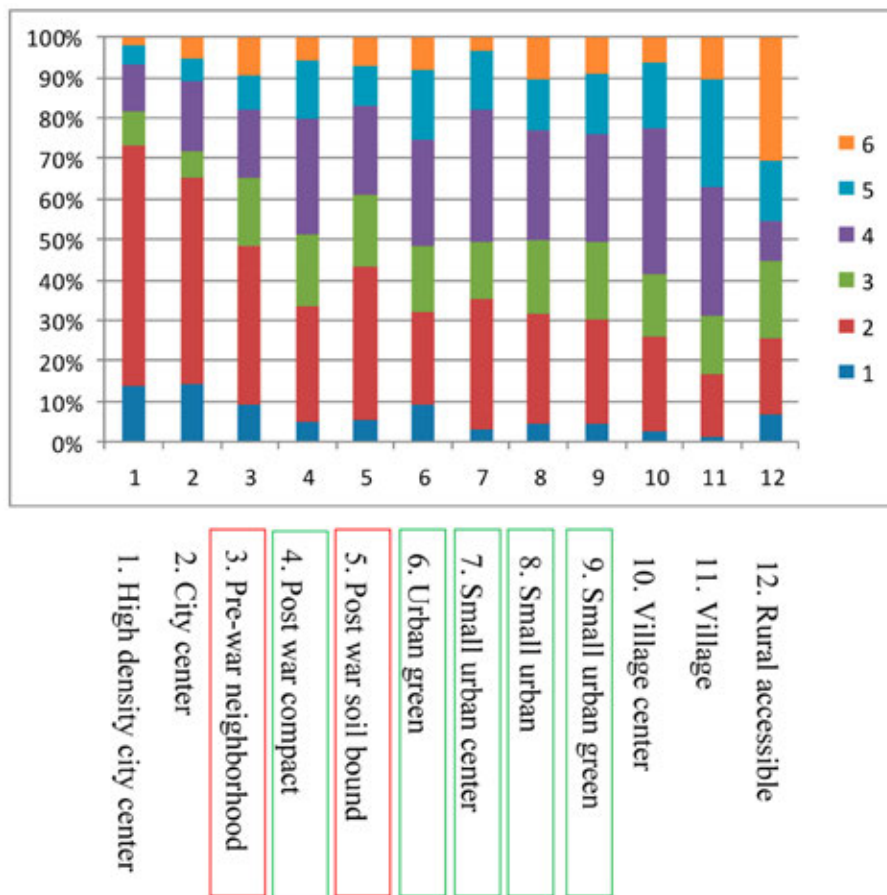


FIGURE 6.15 Surface cover cluster proportions for each of the “urban living environment” categories in the analysed medium-size cities of the North Brabant region. Neighbourhoods 3 and 5 present similar cluster proportions, and thus could be grouped. Neighbourhoods 4, 6, 7, 8 and 9 present similar cluster proportions, and thus could be grouped.

- Analysis of average night LST of the different “urban living environment” categories.

The analysis of the average night-time LST retrieved by Modis 11A1 in 16 satellite images during the heat wave experienced in the month of July 2006 (Figure 6.16) reveals that 12 “urban living environment” categories could actually be grouped in 7, since categories 3, 4 and 5 (pre-war neighbourhood, post-war compact and post-war ground based) could be grouped into one single category since they present similar average LST (around 21°C) and categories 6,7, 8 and 9 could be grouped into another category because they present similar average LST (around 20.3°C).

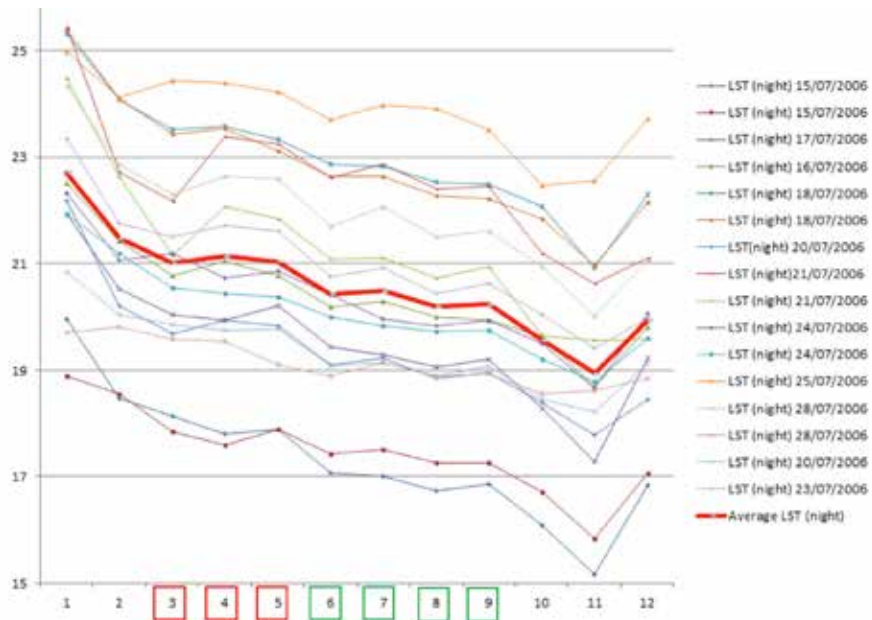


FIGURE 6.16 Average night LST for each of the “urban living categories”. Neighbourhoods 3, 4 and 5 present similar night LST, and thus could be grouped. Neighbourhoods 6, 7, 8 and 9 present similar night LST, and thus could be grouped.

- Proposed “urban living thermal categories” for the region of North Brabant

The surface cluster analysis of the different “urban living environment categories” suggests that these can be grouped into 7 categories. 1/ High density city centre 2/ City centre 3/ pre-war neighbourhood & post-war soil bound 4/ post-war compact & urban green & small urban centre & small urban & small urban green 5/Village centre 6/Village 7/Rural accessible. The average night-time land surface temperature analysis of the “urban living environment categories” suggests the same groups except for the post-war compact neighbourhood’s category which has a night LST similar to pre-war and post war soil bound. The main reason is that post-war compact neighbourhoods is a category that consists of scattered high rise dwelling blocks, interleaved with green areas and large infrastructural roads. The proportion of green areas that can be found in these neighbourhoods is similar that the ones of small urban areas, however the overall night LST is higher in these post-war areas.

§ 6.4 Conclusions

This paper addressed the main question how to ensure that the future development plans do not aggravate the urban heat island (UHI) effect in the North-Brabant urban areas, by focusing on three sub-questions: How bad is the urban heat island problem currently? How does albedo, Normalised difference vegetation index (NDVI), imperviousness, city size and proximity to other urban areas influence the phenomenon? Which of these play the most relevant UHI role? Can we establish a surface thermal urban classification to provide design guidelines to ensure that future developments do not aggravate the UHI phenomenon?

The answer to the main question is found in adjusting the design of the growth areas that are designated by the province North-Brabant. The growth areas are based on the “ladder for sustainable urbanisation” developed by the Dutch Ministry of Infrastructure and Environment. The aspect of urban heat islands is not included in this methodology. The authors propose to include considerations about albedo, greenness (NDVI) and imperviousness, in the design of these future developments.

Our study has revealed that albedo and NDVI are the most relevant parameters influencing the average night-time LST for the analysed North Brabant medium-size cities. Correlation coefficients extracted from the multiple regression analysis are:

FORMULA 6.3

$$\text{LST (average night)} = 27.7 - 34.8 \cdot A + 2.3 \cdot 10^{-8} \cdot S - 0.1 \cdot \text{NDVI}$$

Where A = Albedo, S = surface and NDVI = Normalised Difference Vegetation Index

The surface cover cluster analysis of these three parameters reveals that the 12 “urban living environment” categories used in the region of North Brabant (high-density city centre, city centre, pre-war neighbourhood, post-war compact neighbourhood, post-war soil-bound neighbourhood, urban green, small urban centre, small urban, small urban green, village centre, village, rural accessible) can actually be reduced to 7 categories, since classes 3, 4 and 5 (pre-war neighbourhood, post-war compact and post-war ground based) present similar surface covers (and could thus be grouped) and the “urban living environments” 6, 7, 8 and 9 (green, small urban centre, small urban and small urban green) also present similar surface cover mixes (and could thus be grouped).

This surface cover classification provides guidelines to improve the surface behaviour of the most common urban typologies that can be found in the province of North Brabant and to guide the urban design of the planned future urban developments. All of these conclusions could be integrated in a climate-robust growth areas policy.

§ 6.5 Discussion

The purpose of using the surface cover cluster analysis for the thermal assessment of the different “urban living environment” assessment (instead of calculating directly the average night-time LST of each of these neighbourhood typologies) is to actually map and quantify parameters that can be addressed and improved. Measures to improve albedo, NDVI and imperviousness can be simulated and quantified. Mapping surface cover categories allows designing specific mitigation solutions, instead of only assessing on the intensity of the problem (night LST temperature).

The intention of the study is to analyse the thermal surface cover behaviour of the different “urban living environment” categories in order to design UHI adaptation measures in the existing neighbourhoods and to produce some surface adaptation guidelines for the future developments that will grow adjacent to the existing medium-size cities. The same urban structures can considerably improve their thermal

behaviour though the implementation of measures that only affect their surface covers. Parameters related to the neighbourhood structure (sky view factor, wind, shadow, ...) as well as factors such as anthropogenic heat emissions should be the object of another study to determine to what extent they influence the formation of the UHI in the province of North Brabant, and to explore and design the development of design guidelines concerning the urban structure for the design of future urban developments.

References

- ABF Research. 14-deling woonmilieus, naar een nieuwe typologie voor het WBO 2002, Delft. September, 2005. Available online at: <http://www.abfresearch.nl>
- AKBARI, H.; POMERANTZ, M.; TAHA, H. Cool surfaces and shade trees to reduce energy use and improve air quality in urban areas. In *Solar Energy*, 70, 2001. 295-310.
- ALBERS, R.A.W.; BOSCH, P.R.; BLOCKEN, B.; VAN DEN DOBBELSTEEN, A.A.J.F.; VAN HOVE, L.W.A.; SPIT, T.J.M.; VAN DE VEN, F.; VAN HOOFF, T.; ROVERS, V. Overview of challenges and achievements in the climate adaptation of cities and in the Climate Proof Cities program. In *Building and Environment*, 2015.
- AUER, A. H. Correlation of land use and cover with meteorological anomalies. In *Journal of Applied Meteorology*, 17, 1978. 636-643.
- BALABAN, O.; BALABAN, M. S. Adaptation to climate change: barriers in the Turkish local context. In *Journal of Land Use, Mobility and Environment*, 8 (Special Issue ECCA 2015), 2015. 7-22. DOI: <http://dx.doi.org/10.6092/1970-9870/3650>
- CENTRAAL BUREAU VOOR DE STATISTIEK. 2006. <http://www.cbs.nl/en-GB/menu/themas/bevolking/publicaties/artikelen/archief/2006/2006-2019-wm.htm>.
- CHANDLER, T. J. *The Climate of London*. Hutchinson, 1965. 292.
- DEPPISH, S.; DITTMER, D. Urban Planning Dealing with Change and Infrastructure. In *Journal of Land Use, Mobility and Environment*, 8(2), 2015. 129-142. DOI: <http://dx.doi.org/10.6092/1970-9870/2982>
- DOUSSET, B.; GOURMELON, F. Surface temperatures of the Paris Basin during summertime, using satellite remote sensing data. In *Proceedings of the 5th International Conference on Urban Climate*, Lodz, Poland, September 2003. Retrieved from http://nargo.geo.uni.lodz.pl/~icuc5/text/O_27A_2.pdf
- DOUSSET, B.; GOURMELON, F.; LAAIDI, K.; ZEGHNOUN, A.; GIRAUDET, E.; BRETIN, P.; MAURID, E.; VANDENTORREN, S. Satellite monitoring of summer heat waves in the Paris metropolitan area. In *International Journal of Climatology*, 31(2), 2011. 313-323. DOI:10.1002/joc.2222
- DUTCH MINISTRY OF INFRASTRUCTURE AND ENVIRONMENT. Ministerie van Infrastructuur en Milieu. <http://ladderverstedelijking.minienm.nl/#ladder>
- ELLEFSSEN, R. Mapping and measuring buildings in the urban canopy boundary layer in ten US cities. In *Energy and Buildings*, 15-16, 1990/91. 1025-1049.
- FUKUOKA, Y. Physical climatological discussion on causal factors of urban temperature. *Memoirs Faculty Integrated Arts and Sciences*. Hiroshima University, 8, 1983. 157-178
- GALDERISI, A.; FERRARA, F.F. Enhancing urban resilience in face of climate change. A Methodological Approach. In *Journal of Land Use, Mobility and Environment*, 2, 2012. 69-87. Print ISSN 1970-9889, e- ISSN 1970-9870. DOI: 10.6092/1970-9870/936
- GAO, Y.; XU, J.; YANG, S.; TANG, X.; ZHOU, Q.; GE, J.; XU, T.; LEVINSON, R. Cool roofs in China: Policy review, building simulations, and proof-of-concept experiments. In *Energy Policy*, v.74, 2014. 190-214.
- HEIDEN, U.; HELDENS, W.; ROESSNER, S.; SEGL, K.; ESCH, T.; MUELLER, A. Urban structure type characterization using hyperspectral remote sensing and height information. In *Landscape and Urban Planning*, 2012. *Plan* 105(4):361-375. DOI:10.1016/j.landurbplan.2012.01.001
- HELDENS, W.; TAUBENBOCK, H.; ESCH, T.; HEIDEN, U.; WURM, M. Analysis of surface thermal patterns in relation to urban structure types: a case study for the city of Munich. *Thermal Infrared Remote Sensing: sensors, methods, applications*. 2013.

- HOUET, T.; PIGEON, G. Mapping urban climate zones and quantifying climate behaviors--an application on Toulouse urban area (France). In *Environmental Pollution*, Aug-Sep 2011. 159 (8-9):2180-92. DOI: 10.1016/j.envpol.2010.12.027
- HOVE, L.W.A.; STEENEVELD, G.J.; JACOBS, C.M.J.; HEUSINKVELD, B.G.; ELBERS, J.A.; MOORS, E.J.; HOLTSLAG A.A.M. Exploring the Urban Heat Island Intensity of Dutch Cities. Alterra report 2170. Wageningen, Netherlands, 2011.
- KONINKLIJK NEDERLANDS METEOROLOGISCH INSTITUUT (KNMI) 2013 <http://www.knmi.nl/klimatologie/lijsten/hittegolven.html>
- MAVROGIANNI, A.; DAVIES, M.; BATTY, M.; BELCHER, S.E.; BOHNENSTENGEL, S.I.; CARRUTHERS, D.; CHALABI, Z.; YE, Z. The comfort, energy and health implications of London's urban heat island. In *Building Services Engineering Research and Technology*, 32 (1), 2011. 35-52. DOI: 10.1177/0143624410394530
- NICHOL, J. Remote Sensing of Urban Heat Islands by Day and Night. In *Photogrammetric Engineering and Remote Sensing*, 5, 2005. 613-621.
- NIE, Q.; XU, J. Understanding the effects of the impervious surfaces pattern on land surface temperature in an urban area. In *Frontiers of Earth Science*, volume 9, Issue 2, 2014. 276-285.
- OKE, T.R. City size and the urban heat island. In *Atmospheric Environment*, 7, 1973. 769.779.
- OKE, T.R. 2004: Initial guidance to obtain representative meteorological observations at urban sites. IOM Rep.81, WMO/TD-No. 1250, 2004. 47. Available online at: www.wmo.int/pages/prog/www/IMOP/publications/IOM-81/IOM-81-UrbanMetObs.pdf.
- PAPA, R.; GALDERISI, A.; VIGO MAJELLO, M.C.; SARETTA, E. Smart and resilient cities. A systemic approach for developing cross-sectoral strategies in the face of climate change. In *Journal of Land Use, Mobility and Environment*, 8 (1), 2015. 19-49. DOI: <http://dx.doi.org/10.6092/1970-9870/2883>.
- PARK, H.S. Features of the heat island in Seoul and its surrounding cities. In *Atmospheric Environment*, 20, 1986. 1859.1866.
- PAULEIT, S.; DUHME, F. Assessing the environmental performance of land cover types for urban planning. In *Landscape and Urban Planning*, 52, 2000. 1-20.
- PLANBUREAU VOOR DE LEEFOMGEVING (PBL). 2006. Available online at: <http://www.pbl.nl/nieuws/persberichten/2006/20060627-Rol-van-nationale-typologieen-in-ruimtelijk-beleid-neemt-af> <http://www.pbl.nl/nieuws/persberichten/2006/20060627-Rol-van-nationale-typologieen-in-ruimtelijk-beleid-neemt-af> <http://www.pbl.nl/publicaties/2006/Indelen-en-afbakenen> http://www.pbl.nl/sites/default/files/cms/publicaties/Indelen_en_afbakenen_Bijlagen.pdf <http://www.pbl.nl/node/59416>
- POULUS, C.; HEIDA, H. Woningmarkt analyses Brabant. 2002. Available online at: <http://www.brabant.nl/applicaties/sis/download.ashx?qvi=11004>
- PRADO, R.T.A.; FERREIRA, F.L. Measurement of albedo and analysis of its influence the surface temperature of building roof materials. In *Energy and Buildings*, volume 37, Issue 4, April 2005. 295-300.
- PROVINCIE NOORD-BRABANT. Spatial vision. Structuurvisie partiele herziening 2014 (2010).
- PROVINCIE NOORD-BRABANT. Spatial regulations. Verordening ruimte, 2014. <https://www.brabant.nl/dossiers/dossiers-op-thema/ruimtelijke-ordening/verordening-ruimte.aspx>
- RICHTER, R.; SCHLAPFER, D. Atmospheric/Topographic Correction for Satellite Imagery. ATCOR-2/3 User Guide, version 8.2.1, 2013.
- RIGO. Naoorlogse wijken in beeld. Wijktypologie en analyse lokale aanpakstrategieën voor woonwijken uit 1946-1980, Amsterdam, 1995.
- RIGO. Vooroorlogse wijken in beeld. Wijktypologie van vooroorlogse woonwijken en ontwikkelingen in de periode 1990-1995, Amsterdam, 1997.
- SAILOR, D.J. Simulated urban climate response to modification in surface albedo and vegetative cover. In *Journal of Applied Meteorology*, 34, 1995. 1694-1704.
- SCHERER, D.; FEHRENBACH, U.; BEHA, H.D.; PARLOW, E. Improved concepts and methods in analysis and evaluation of the urban climate for optimizing urban climate processes. In *Atmospheric Environment*, 33, 1999. 4185-4193.
- STEWART, I.D.; OKE, T.R. Local Climate Zones for Urban Temperature Studies. In *Bulletin of the American Meteorological Society*, vol. 93, issue 12, 2012. 1879-1900.
- STONE, B. JR. *The City and the Coming Climate: Climate Change in the Places We Live*. New York, Cambridge University Press, 2012.

- STERL, A.; SEVERIJNS, C.; VAN OLDENBORGH, G.J.; DIJKSTRA, H.; HAZELEGER, W.; VAN DEN BROEKE, M.; BURGERS, G.; VAN DEN HURK, B.; VAN LEEUWEN, P.J.; VAN VELTHOVEN, P. When can we expect extremely high surface temperatures? In *Geophysical Research Letters*, 35, 2008. L14703 DOI: 10.1029/2008GL034071.
- TAHA, H. Urban climates and heat islands: albedo, evapotranspiration, and anthropogenic heat. In *Energy and Buildings*, 25, 2008. 99-103.
- TAHA, H.; AKBARI, H.; ROSENFELD, A.H.; HUAND, Y.J. Residential cooling loads and the urban heat island: The effects of albedo. In *Building and Environment*, 23, 1988. 271-283.
- TAHA, H.; AKBARI, H.; SAILOR, D.; RITSCHARD, R. Causes and effects of heat islands: sensitivity to surface parameters and anthropogenic heating. Lawrence Berkeley Lab. Rep. 29864, Berkeley, CA, 1992.
- TANG, Y. An integrated GIS-spatial analysis of Atlanta's urban structure and urban space. PhD thesis, University of Georgia, USA, 2007. <http://athenaeum.lib.uga.edu/handle/10724/10039>.
- UNITED STATES ENVIRONMENTAL PROTECTION AGENCY (US EPA). <http://www.epa.gov/heatisland/>
- UNITED STATES GEOLOGICAL SURVEY (USGS) webpage. <http://glavis.usgs.gov>
- VAN DEN HURK, B.; TANK, A.K.; LENDERINK, G.; VAN ULDEN, A.; VAN OLDENBORGH, G.J.; KATSMAN, C.; VAN DEN BRINK, H.; KELLER, F.; BESSEMBINDER, J.; BURGERS, G.; KOMEN, G.; HAZELEGER, W.; DRIFFHOUT, S. KNMI Climate Change Scenarios 2006 for the Netherlands. WR 2006-01.
- VANDENTORREN, S.; BRETIN, P.; ZEGHNOUN, A.; MANDEREAU-BRUNO, L.; CROISIER, A.; COCHET, C.; LEDRANS, M. August 2003 Heat Wave in France: Risk Factors for Death of Elderly People Living at Home. In *European Journal of Public Health*, 16(6), 2006. 583-591. DOI: 10.1093/eurpub/ckl063
- VAN DER HOEVEN, F.; WANDL, A. Amsterwarm: mapping the landuse, health and energy-efficiency implications of the Amsterdam urban heat island. In *Building Services Engineering Research and Technology*, 2014.
- VROM. Ministerie van Volkshuisvesting, Ruimtelijke Ordening en Milieubeheer. Nota ruimte. 2004. Available online at: https://www.ser.nl/-/media/db_adviezen/2000_2009/2004/b22768%20pdf.ashx
- WENG, Q.; LU D. Sub-pixel analysis of urbanisation effects on the interactions between land surface temperature and vegetation cover in Indianapolis, U.S.A. In *International Journal of Applied Earth Observation and Geoinformation*, 2008. 68-83.
- WILMERS, F. Effects of vegetation on urban climate and buildings. In *Energy and Buildings*, 1991. 15-16, 507-514.
- WURM, M.; TAUBENBOCK, H.; DECH, S. Quantification of urban structures on building block level utilizing multisensoral remote sensing data. SPIE Europe, Toulouse, 2010. 13.
- XIAO, R.B.; OUYANG, Z.Y.; ZHENG, H.; LI, W.F.; SCHIENKE, E.W.; WANG, X.K. Spatial pattern of impervious surfaces and their impacts on land surface temperature in Beijing, China. In *Journal of Environmental Science (China)*, 2007.
- XU, H.; LIN, D.; TANG, F. The impact of impervious surface development on land surface temperature in a subtropical city: Xiamen, China. In *The International Journal of Climatology*, 2012.
- YU, X.; LU, C. Urban percent impervious surface and its relationship with land surface temperature in Yantai City China. 35th International Symposium on Remote Sensing of Environment. IOP Conf. Series: Earth and Environmental Science, 17, 2014.
- YUAN, F.; BAUER, M. Comparison of impervious surface area and Normalised difference vegetation index as indicators of surface urban heat island effect in Landsat imagery. In *Remote Sensing of Environment*, 106, 2007. 375-386.
- ZHANG, D.; SHOU, Y.; DICKERSON R. Upstream urbanisation exacerbates urban heat island effects. In *Geophysical Research Letters*, vol. 36, 2009. L24401.